

Matteo Thun

**Facciate continue in rovere lamellare: sostenibilità
del legno nell'involucro edilizio in architettura.**

Case study: via Tortona 37 - Milano

Biocasa felice - made expo

17 novembre 2012

relatore: Arch. Luca Colombo
partner

Matteo Thun
& Partners

facciate continue in rovere lamellare unitherm.it by uniform.it

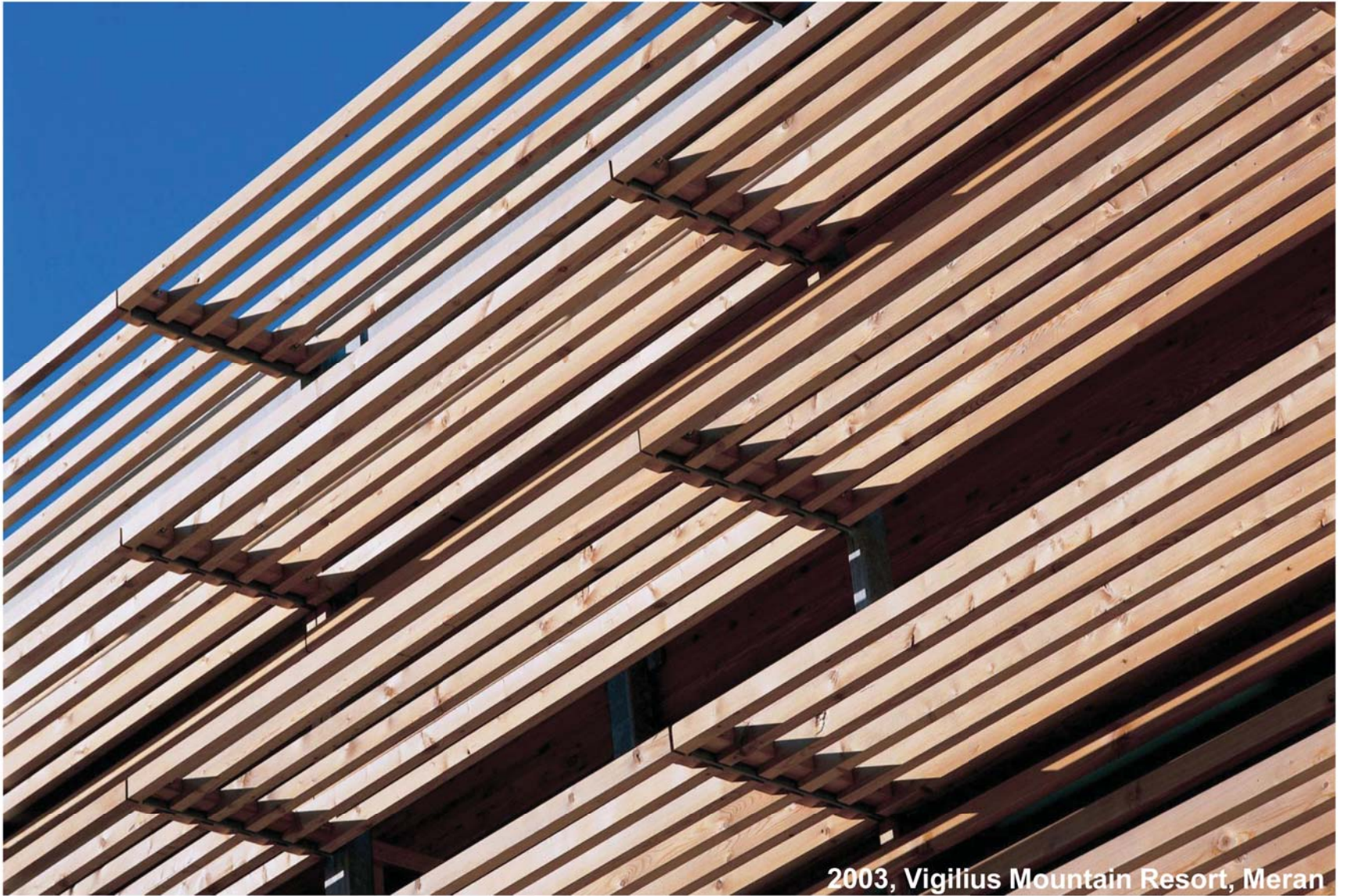


Vigilius Mountain Resort

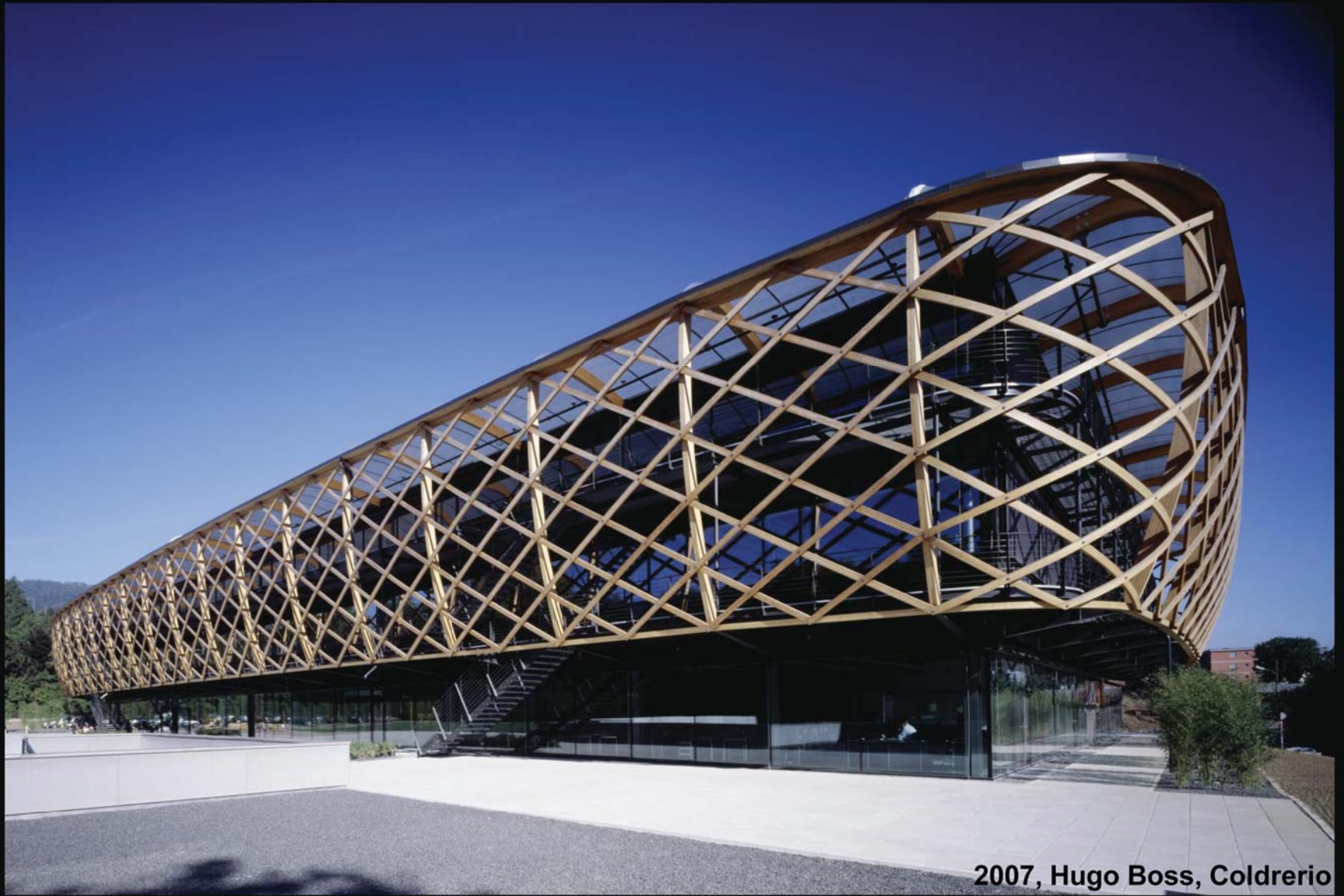


2003, Vigilius Mountain Resort, Meran

Vigilius Mountain Resort



2003, Vigilius Mountain Resort, Meran



2007, Hugo Boss, Coldrerio

Energy module: Bio Mass Power Plant



2008, Powerstation Schilling, Schwendi

Energy module: Bio Mass Power Plant



2008, Powerstation Schilling, Schwendi

Energy module: Bio Mass Power Plant



2008, Powerstation Schilling, Schwendi



2009, Edelweiss Katschberg

EdelWeiss Residence, Katschberg



EdelWeiss Residence, Katschberg



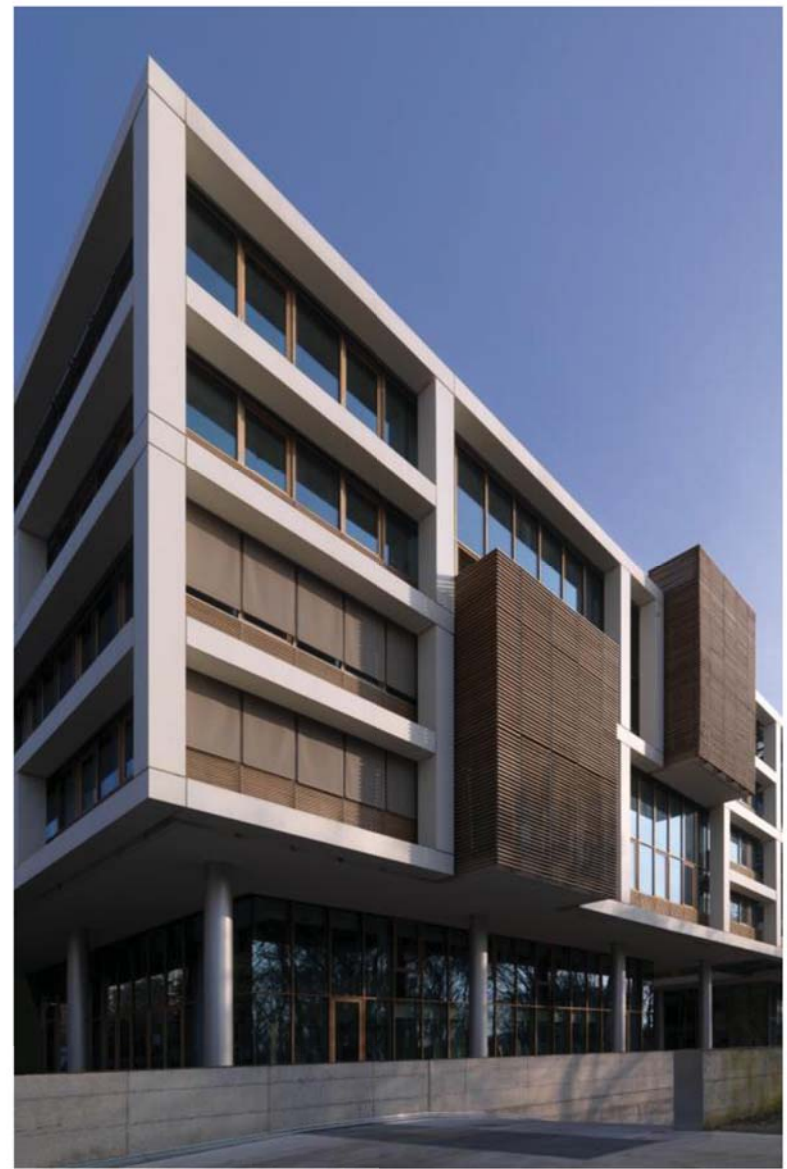
2009, Edelweiss Katschberg

Tortoma 37: Multipurpose building



facciate continue in rovere lamellare unitherm.it by uniform.it

Tortoma 37: Multipurpose building



facciate continue in rovere lamellare unitherm.it by [uniform.it](https://www.uniform.it)



Tortoma 37: Multipurpose building



facciate continue in rovere lamellare unitherm.it by uniform.it

Tortoma 37: Multipurpose building



facciate continue in rovere lamellare unitherm.it by uniform.it

Tortoma 37: Multipurpose building



facciate continue in rovere lamellare unitherm.it by [uniform.it](https://www.uniform.it)

Tortoma 37: Multipurpose building



facciate continue in rovere lamellare unitherm.it by uniform.it

Tortoma 37: Multipurpose building



facciate continue in rovere lamellare unitherm.it by uniform.it



Tortoma 37: Multipurpose building



facciate continue in rovere lamellare unitherm.it by **uniform.it**



Tortoma 37: Multipurpose building



facciate continue in rovere lamellare unitherm.it by uniform.it

Tortona 37: Multipurpose building



facciate continue in rovere lamellare unitherm.it by uniform.it

Matteo Thun



unitherm.it by uniform.it: facciate continue in rovere lamellare

